



THE SOUTH END HISTORICAL SOCIETY Monthly News Update

Note from the Executive Director



Dear Friends:

January has come and gone. How did you begin the new year? We began migrating our administrative functions to Google Apps for Business, continued working on redesigning and planning the SEHS' spring fundraiser, welcomed the Boston University School of Medicine Historical Society to the SEHS to give a program, welcomed new members at our annual new members reception, began training new collections volunteers, and gave a lecture about South End history to the wonderful residents of the Susan Bailis House.

We have a lot of news for you in this monthly update—event reminders, community happenings, fundraising information, and some general housekeeping notes. Please call me at 617-536-4445 or email me at hope.shannon@southendhistoricalsociety.org with questions or comments.

I hope to see you soon!

Hope J. Shannon
Executive Director, SEHS

FOLLOW US:  /southendhistory  /southendhistsoc

BLOG: southendhistory.org WEB: southendhistoricalsociety.org

UPCOMING EVENTS

Local South End author
Lynne Potts
will read from her new book
A Block in Time:
*A History of Boston's South End from
a Window on Holyoke Street.*

A Block in Time tells the story of the South End from its origins in Boston harbor to its present day iteration as a lively and diverse neighborhood. Lynne Potts recounts her 1978 move to Holyoke Street with two young children and her search to discover the area's past, connecting her personal experience with vivid local history.

February 21, 2013
6:30 P.M.
532 Massachusetts Avenue

Please let us know if you plan to attend
call or e-mail 617-536-4445 or
admin@southendhistoricalsociety.org
to sign up

**MASS AVE AT COLUMBUS:
THE JAZZ CORNER OF BOSTON**

Sabby Lewis at the Savoy Cafe,
Charlie Parker at the Hi-Hat,
Alan Dawson at Wally's Paradise...

Jazz had no better home than
the clubs of Boston's South End

Richard Vacca
author of
The Boston Jazz Chronicles
joins us to talk about the South End's
deep roots in the city's jazz history.

March 21, 2013
6:30 P.M.
532 Massachusetts Avenue
Please let us know if you plan to attend
to sign up, call or email 617-536-4445
admin@southendhistoricalsociety.org

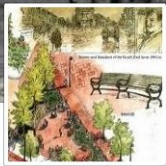


THE SOUTH END HISTORICAL SOCIETY Monthly News Update

COMMUNITY NOTES

Childe Hassam Park

Childe Hassam Park is now on Facebook! Visit Facebook and search for Childe Hassam Park. Follow them for Park updates and events.



Childe Hassam Park
12 likes · 9 talking about this · 0 were here

8-10 Taylor Street

Many of you have probably heard that the owner of 8-10 Taylor Street has been called before the South End Landmark District Commission on **Tuesday, February 5th** for a violation. The violation stems from unapproved demolition that took place at the property in January. These hearings are open to the public. If you would like to attend, please call the Environment Department at City Hall at 617-635-3850 for more information about the time and place of the hearing.

The South End Patch has run a few articles about the issue at southend.patch.com.

Aceso

The Journal of the Boston University School of Medicine Historical Society

The Boston University School of Medicine Historical Society (BUSMHS) has released the first issue of their journal, *Aceso*. To see the journal and what the BUSMHS has been up to, please visit their website at: <http://blogs.bu.edu/busmhs>



REMINDERS FROM THE SEHS

Membership Renewal

If you have not done so already, please send in your membership dues for the 2013 calendar year.

- Individual membership: \$25
- Family/dual: \$40
- Supporting: \$100
- Patron: \$150
- Benefactor: \$250

Dues can be paid with a check made out to the South End Historical Society and sent to the same at:

532 Massachusetts Avenue
Boston, MA 02118

-or-

Dues can be paid by credit card on our website at southendhistoricalsociety.org/membership

Annual Appeal

Our Winter 2012-2013 Annual Drive...

Please consider making a donation!

Donations can be made by sending a check to:
South End Historical Society
532 Massachusetts Avenue
Boston, MA 02118

-or-

By credit card on our website at southendhistoricalsociety.org/donate

All donations to the Annual Appeal/ Annual Drive are 100% tax-deductible.

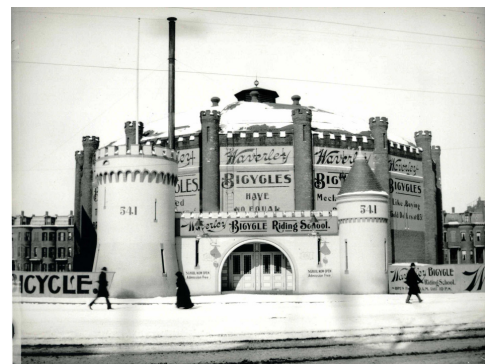
These donations help us to continue to advocate for the preservation of the South End's historic architecture and to preserve and promote its rich history.

Calendars for sale

2013 South End History Wall Calendars

Need a 2013 wall calendar for yourself? Need a gift for a friend, loved one, or co-worker? Check out our South End History wall calendar. Packed with beautiful historic images, it will brighten your wall for the rest of 2013! Visit southendhistoricalsociety.org/calendar or call 617-536-4445 to purchase or for more information.

Buy now and see this 1890s image of the Cyclorama during February!



FOLLOW US:



[/southendhistory](https://www.facebook.com/southendhistory)



[/southendhistsoc](https://twitter.com/southendhistsoc)

BLOG: southendhistory.org

WEB: southendhistoricalsociety.org